

Coos Bay Estuary Management Plan

Phase 1 Revision

The Coos Bay Estuary Management Plan (CBEMP) Phase 1 revision represents Coos County's first step towards improving the plan's ability to meet the needs of the communities and local governments encompassed by the plan. CBEMP Phase 1 revisions do not include any changes to zoning or management unit designations—those will be addressed in subsequent phases.

CBEMP Phase 1 revision components:

1) Improve plan usability

- Digitize and add hyperlinks
- Use clear headers
- Incorporate figures and tables

2) Update maps and inventory data with Map Atlas and Data Source

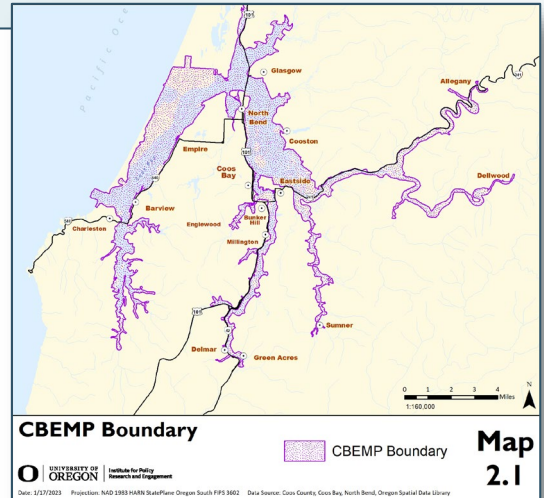
- Map Atlas: A series of maps and tables analyzing current natural resource, hazard, and socio-economic conditions and uses in the estuary and surrounding shorelands. In paper and digital formats.
- Data Source: An encyclopedic compilation of all available data describing the socioeconomic and environmental conditions in the Coos Bay area

3) Improve jurisdictional alignment

- Resolve management unit conflicts between county and cities
- Officially recognize need for diverse citizen involvement and multijurisdictional coordination

4) Update plan with current agency names, laws and regulations

- Correct typos
- Update agency titles
- Update definitions to reflect current regulations
- Amend references to reflect current state and federal laws and regulations



To review draft CBEMP Phase 1 updates go [HERE](#)

Please send comments to Jill Rolfe, Coos County Community Development Director

planning@co.coos.or.us

CBEMP Plan Revision Partners

- ***Lead Agency: Coos County***
- ***Technical assistance: [University of Oregon's Institute for Policy, Research and Engagement](#)***
- ***Community facilitation/funding: [Partnership for Coastal Watersheds](#)***

